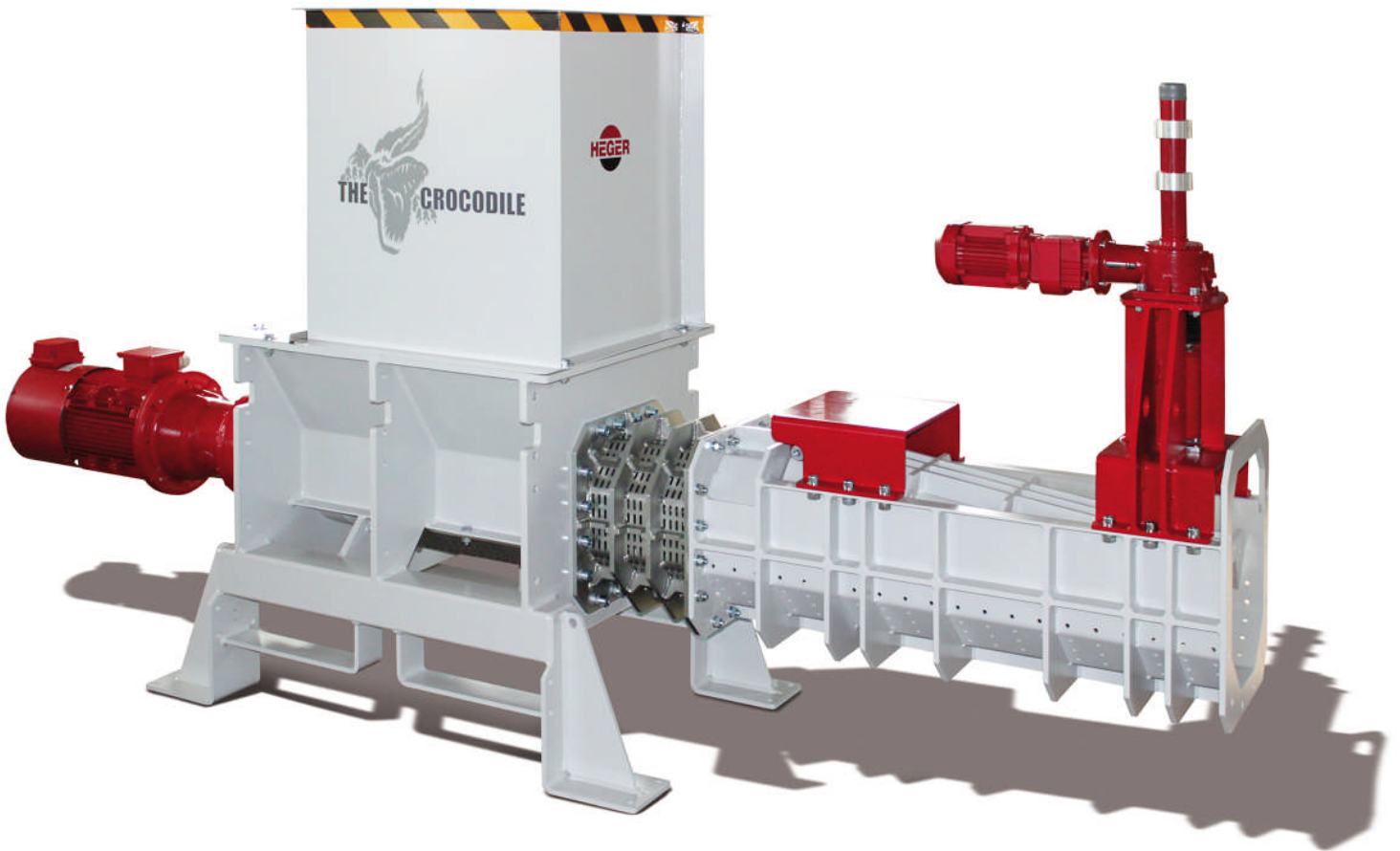


THE CROCODILE



**DEWATERING AND COMPRESSION SYSTEMS
ECONOMICAL. POWERFUL. SUPERIOR.**



Application

HEGER dewatering of series **CROCODILE** is used for solid and liquid separation, specifically the removal of residual fluids from waste materials.



Figure: Volume of Tetra Pak® at the outlet

Areas of application

- Emptying of liquid content; Plastic cups, Tetra Pak® Packaging, cans or PET bottles.
- Dewatering of sewage sludge and industrial waste.
- Plastic processing dewatering tasks.

Theory

The press canal consists of a horizontally mounted auger which condenses the solids contained in the material. The required dewatering pressure is fully adjustable and liquid flows from the screen channel segment.

Benefits

- Significant weight reduction of the dewatered materials can significantly reduce transport costs.
- Often dehydrated material even in incinerators can be disposed.
- Dehydrated material is easier to recycle.
- More efficient waste processing at source can increase recyclable value.
- Designed in high efficiency factor. A maximum drainage level is achieved with minimal energy.
- Low operating and maintenance costs.



Figure: Dewatering auger assembly



Figure: Dewatering screen channel segment in VA

Technical characteristics

- Performance-oriented machine concept.
- Robust engineering design drive technology ensure extended machine service life.
- On armoured auger tip reduces excessive channel wear.

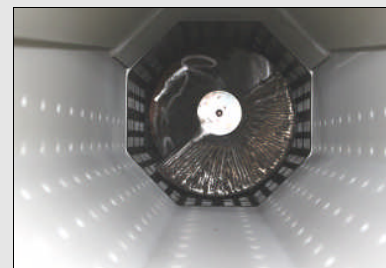


Figure: Dewatering auger assembly

- Very low-noise mode of the press 60-70 dB(A).
- All built-in electromotive drives (No hydraulics or Pneumatics).
- The necessary dewatering pressure can be either set manually or via an optional fully automatic press pressure control.
- The drainage channel is made of VA and available in different hole diameters depending on volumes.
- Automatic overloaded detection and reversing prevents damage from unwanted bodies (optional).
- Available accessories include; drip pans, and fill equipment.
- Control cabinet with modern PLC control.
- The machine is delivered ready for immediate operation.
- All machines comply with the CE standard.

Overview of technical data ¹⁾

System / Variant	Throughput ²⁾	Residual Moisture ²⁾	Auger Press	Press channel cross section	Funnel opening	Auger inlet	Weight	Installed Press Performance	Electrical connection
	(m³/h)	(%)	(Type)	(mm)	(mm)	(mm)	(Kg)	(KW)	(V)
THE CROCODILE 200									
CROCODILE 200 T	1 - 2	30 – 50	SVE 200	210 x 210	400 x 600	400 x 210	300	3,0	3 x 400-480 V
THE CROCODILE 250									
CROCODILE 250 T	4 - 5	30 – 50	SVE 250	290 x 290	500 x 600	500 x 290	500	5,5	3 x 400-480 V
THE CROCODILE 300									
CROCODILE 300 T	6 – 7	30 – 50	SVE 300	320 x 320	1000 x 600	600 x 320	700	9,2	3 x 400-480 V
THE CROCODILE 400									
CROCODILE 400 T	8 - 10	30 – 50	SVE 400	400 x 400	1000 x 700	600 x 400	900	15,0	3 x 400-480 V

¹⁾ Specification subject to change ²⁾ depending on the water and material content